

# Industry 4.0 for Welding: **magNET**





# magNET

The future of welding lies in seamless connectivity and real-time data analysis. This is a critical component of the Industry 4.0 revolution in the welding industry.

## Industry 4.0

It is very important to collect and analyze real-time data from all processes in order to follow production efficiency and product quality to act on problems before they occur.

## Digitalization

We provide competitive advantage to our customers through the digitalization of welding processes and help achieve a process ready for the Industry 4.0 revolution. Magnet provides users with a product that is intuitive and easy to connect and use..

## Real-time analysis of a process is priceless

Magnet allows users to connect to all machines, brands, WPS documents and to any kind of software for a seamless integration. It is important to analyze data as it happens from any device or location.

The magNET welding management platform provides the ideal solution for anyone with a welding related process.



# Every Weld is Critical

- Data collection from any make/model welding equipment
- Experience in a range of industries from automotive to steel construction
- Access our web-based software wherever you are
- Log every weld with a sampling rate of up to 10 logs per second
- Add limits and alarms to follow errors and act on them
- Track machine and welder performance
- Special applications for robotic welding
- Integration with WPS/WPQR documentation





# Welding Module Options

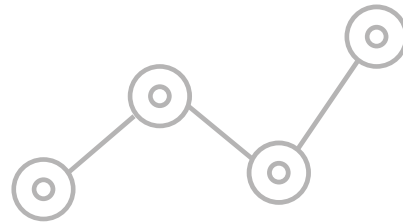


- Simple user interface
- Detailed reports for all data
- Machine and welder performance tracking
- Integration with WPS/WPQR documents
- Web- based software
- Limits and alarms
- Integration with ERP systems or Excel
- Real-time connection through WiFi or Ethernet



## From the MagNET option with 10" screen;

- Welder data entry
- Error entry
- Downtime entry
- Work order or WPS number entry
- Gas or Wire type entry





- Ethernet (10/100)
- IEEE 802.11 Wireless Network Connection(b/g/n)
- 1 x USB 2.0 Host, 1 x USB 2.0 OTG Connection
- 4 x Isolated Analog Input
- 1 x Isolated Current Sensor Input  
(+15VDC, -15VDC Isolated Feed Output)
- 1 x Gas Input
- 1 x Gas Outlet





# Your data is with you wherever you are

- Web based software allows you to access data wherever you are
- Detailed analysis of critical parameters
- Seamless integration with existing software

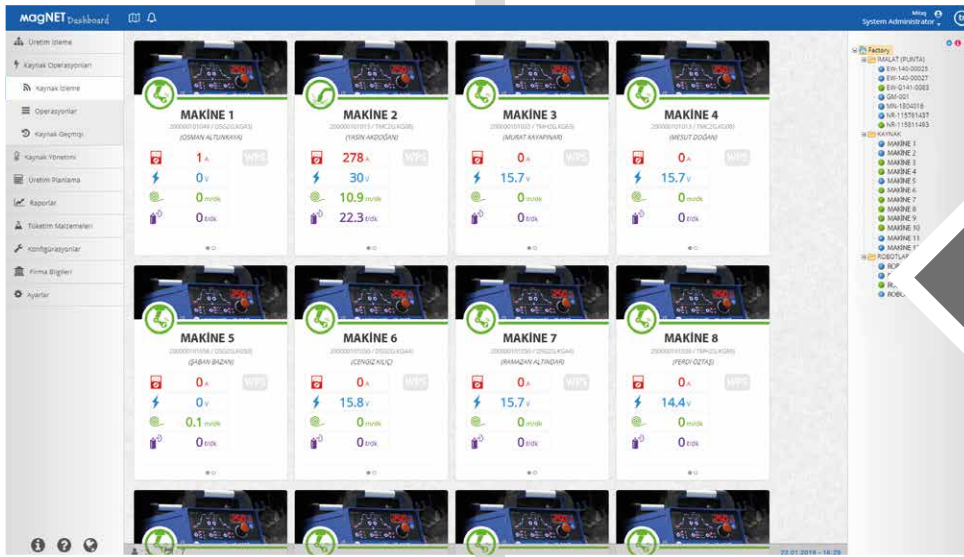
## Data collected from all welding processes;

- Arc-on Time
- Weld Deposition
- Weld Current and Voltage
- Wire Speed and Consumption
- Gas Flow and Consumption
- Energy Consumption
- Welding speed for semi-automated systems

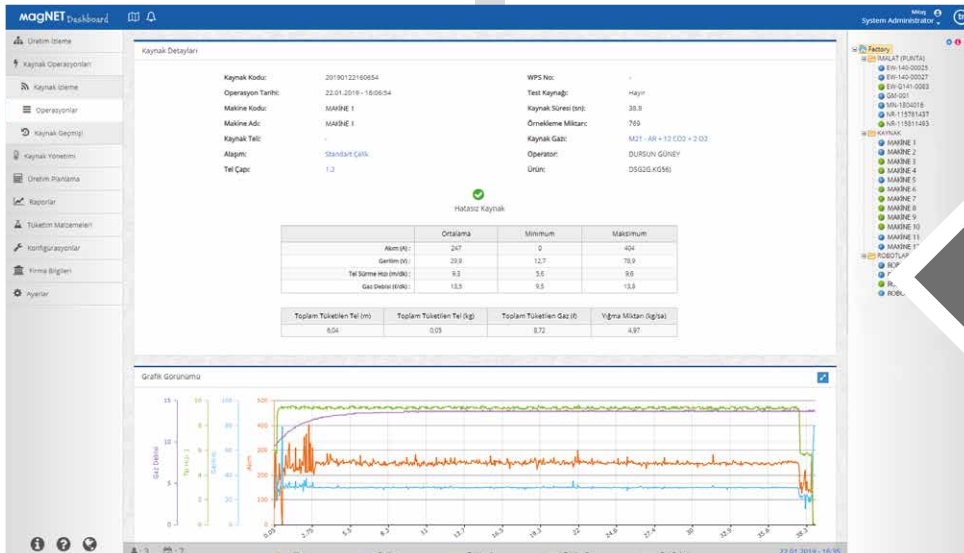
## For robotic applications;

- Cycle time
- Robotic arm movement time (when not welding)
- Application for 2 sided fixtures
- Output to robot if gas or wire is finished

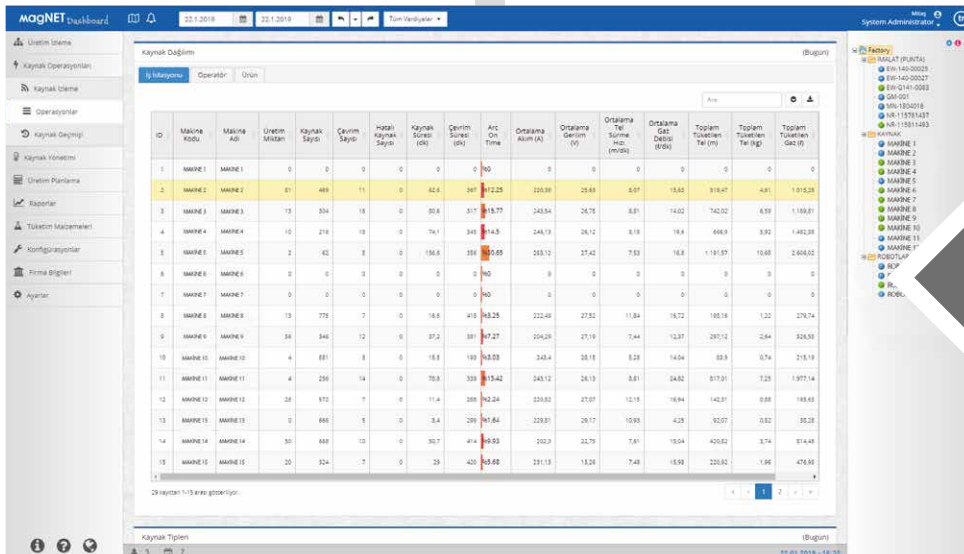




• Intuitive and easy to use interface



• Detailed analysis of every weld log



• Comparison and detailed data for every welding machine



# Large Operator Screen

With an optional 10" screen the welder can enter;

- Identity
- Errors
- Downtimes
- IWork orders and WPS data
- Gas and Wire Types



## Ready for EN1090

- Fully integrated for welding with WPS data
- It is possible to use database of ready Magmaweld WPS data
- Save all data in the cloud





· Welder Identification



· Work order and product integration



· Gas and Wire Type Entry

# 100% Magmaweld

magNET is fully designed and manufactured by Magmaweld engineers at its Magma Mekatronik factory.

Please contact us for more information and for a free demo booking.



Organize Sanayi Bölgesi, 5. Kısım 45030 Manisa / Turkey

[info@magmaweld.com.tr](mailto:info@magmaweld.com.tr)

[magmaweld.com](http://magmaweld.com)

(+90) 444 93 53